

全国服务热线: 400-700-6180
National toll free hotline

JIBIMED[®]

江阴滨江医疗设备有限公司
Jiangyin Binjiang Medical Equipment Co., Ltd.

生产地址: 江苏省江阴市周庄镇长寿云顾路38号
Add: No. 38, Yungu Road, Changshou Community,
Zhouzhuang Town, Jiangyin City, Jiangsu
电话 (Tel): +86-510-86270699 86296768
传真 (Fax): +86-510-86270599
邮编 (P.C.): 214400
Http://www.chengyi-cn.com
E-mail: postmaster@chengyi-cn.com
jibimed@vip.163.com



滨江医疗以持续改进产品为己任, 谨保留不事先通知而进行任何可能影响参数、外观和色泽更改的权利。
*JIBIMED is responsible for improving the products, and reserves the right to change the design such as parameter, appearance and color without notice.

整合推广: YUUN 嘉兴有利广告有限公司 电话: 0573-82071685 013957389218



**医院消毒供应中心
整体解决方案**

WHOLE SOLUTION OF
CENTRAL STERILE SUPPLY DEPARTMENT
(CSSD)



COMPANY INTRODUCTION

25+

20多年制造行业经验
More than 20 years of
experience in sterilizers
manufacturing.

技术领先

Leading Technology

与国内多个研究院合作
Cooperate with multiple
research institutes in China

体系完善

Integrity System

通过CE、ISO9001、
ISO13485认证
With CE, ISO9001 and
ISO13485 certificate

企业简介

江阴滨江医疗设备有限公司位于山清水秀、人杰地灵的中国第一县（市）——江苏省江阴市，是一家专业从事消毒灭菌、医疗设备研发、制造与销售的高科技企业。

秉持“技术体现我们的智慧、质量体现我们的尊严”的经营理念，经过数十年的发展，滨江医疗汇聚了一批国内灭菌、医疗设备应用研究领域最优秀的专业人才和资深专家顾问，形成了跟踪国内外顶尖技术的实力，已成为中国最具规模、出口量最大、最专业的灭菌、医疗设备制造商之一。

滨江医疗还提供消毒供应中心工程设计和施工方案、消毒供应中心主要设备、消毒供应中心配件、消毒供应中心耗材以及消毒供应中心追溯系统等。

滨江医疗设有2个厂区，占地面积40余亩，建筑面积30000m²，共有：立式压力蒸汽灭菌器、手提式压力蒸汽灭菌器、台式快速蒸汽灭菌器、卧式压力蒸汽灭菌器、低温等离子体灭菌器、便携式制氧机、大型脉动真空蒸汽灭菌器、电热蒸馏水器、紫外线杀菌灯车和智能干燥箱等10余条产品线，形成了年产销50000台（套）灭菌、医疗设备的能力。其系列灭菌、医疗产品不仅在中国70%以上的医院得到了广泛的应用，还远销欧洲、非洲、东南亚、南美、中东等50多个国家和地区，为全球数以万计的各级医院提供服务。

滨江医疗的所有产品都严格按照质量控制流程，按照ISO9001、ISO13485的要求匠心打造。为客户提供“零缺陷”的产品和全面、周到、贴心的服务是滨江医疗每位员工始终不渝的奋斗目标。“顾客的满意和期望是滨江医疗对质量始终不渝的追求，先进的技术、科学的管理和优良的服务是滨江医疗产品质量不断提高的保证，产品安全、符合法规要求和环境保护是滨江医疗的社会责任”。

滨江医疗以其“创新”的产品、“优质”的服务、“高效”的管理，在国内外的各级医院、各级管理层乃至同行中享有极高的声誉，先后荣获国家“全国质量信得过企业”、无锡市“重合同守信用企业”、省药监局“诚信优秀单位”等荣誉称号。

为了荣誉和承诺，我们将努力做得更好！

Jiangyin Binjiang Medical Equipment Co., Ltd.(JIBIMED) is a professional high-tech enterprise, incorporating research, manufacturing, distribution of sterilizing equipment and relevant medical products, located in Jiangyin city of Jiangsu Province, which is a remarkable place with picturesque scenery. Jiangyin is the birthplace of outstanding people, and ranked first on the economy among all the Chinese cities.

With the foundation concept of "technology reflects our wisdom, quality reflects our dignity". JIBIMED has gathered many top professional experts and famous consultants who involving themselves in the research and development of the sterile products after 10 years development. We have formed strong power to follow the tip technology at home and abroad, has become one of the largest and most professional manufacturers with continuous growth of export for the past years.

JIBIMED provides the whole engineering design, construction scheme, the equipment, the accessories and consumables spares, and also the traceability system of the CSSD.

At present, JIBIMED has two producing zones, covering the area of 40 acres and the building area of 30000 m², we have more than ten full producing lines for the vertical pressure steam sterilizer, portable pressure steam sterilizer, table top steam sterilizer, horizontal pressure steam sterilizer, low temperature plasma sterilizer, ultraviolet lamp trolley and intelligent drying oven, reaches 50000 sets for annual production, which are not only covered 70% of the Chinese hospitals, but also delivered to Europe, Africa, East-South Asia, Middle East over 50 countries, we have provided our goods and service to amount of tens of thousands of hospitals all over the world.

All the products from JIBIMED are strictly treated according to quality control system, such as CE, ISO9001, ISO13485. To supply the "zero-defect" units with comprehensive, considerate and sincere service is our final target goal.

The customers satisfaction and the quality expectation is our unswerving pursuit. Advanced technology, scientific management and excellent service is the guarantee of the continuously improving for the quality. Product safety, regulatory compliance and environmental protection is our social responsibility.

JIBIMED has win highly appreciation among domestic and oversea hospitals of various levels in the sterilizing field with innovated products, qualified service, and efficient management, has been awarded the "National Quality Trustworthy Enterprise", "Jiangsu Integrity and Outstanding Enterprises", ect .

For the honor and the commitment , we strive to do better !

HONOR AND QUALIFICATION

高品质源于国际规范认可
Adhering to international standards,
we strive to create high-quality products

作为高家高新技术企业，滨江医疗依赖准确的定位和敢于拼搏的专业精神，创造了业界发展速度的奇迹，用累累硕果获得客户的满意和用户的信赖。

滨江医疗与中国医疗器械行业共同成长，我们一直在努力。

As a national high-tech enterprise, Binjiang Medical, who relies on the accurate positioning and professional spirit of being brave enough to fight, creates a miracle of development speed in the industry and wins satisfaction and trust from customers.

荣誉资质



PRODUCT FEATURES

产品特性

消毒供应中心是医院内承担各科室所有重复使用诊疗器械、器具和物品清洗、消毒、灭菌以及无菌物品供应的部门，也是预防与控制医院感染、保证医疗护理质量的重点科室。消毒供应中心的质量管理关系到医疗质量安全及患者生命安全。

滨江医疗致力于为消毒供应中心提供整体设计、工程施工、配套设备供应等一站式服务。我们将严格按照卫生部新规范、新标准，竭诚为你提供最完美的消毒供应中心整体解决方案。

CSSD(central sterile supply department), which is responsible for the cleaning, disinfection, and sterilization of all the reused diagnostic and treatment instruments, utensils and articles from all departments in the hospital, and also in charge with the supply of the sterile items. It is the key department for preventing and controlling hospital infection to ensure the quality of medical care, the quality management of CSSD affects the medical safety and patients' lives.

JIBIMED is committed to providing CSSD one-stop services such as overall design, engineering construction, and equipment supply. We will strictly follow the new norms and standards of the Ministry of Health, and wholeheartedly provide you with the whole perfect solution.



功能性
Function



服务性
Service



专业性
Professional

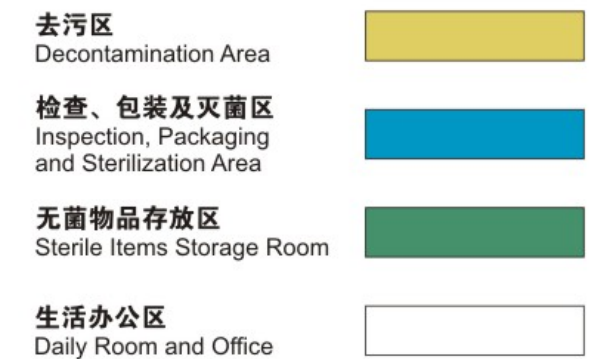


区域化
Zone partition

DESIGN BASIS

设计依据

- 1、《医院消毒供应中心管理规范》WS 310.1-2016
 - 2、《医院消毒供应中心清洗消毒及灭菌技术操作规范》WS 310.2-2016
 - 3、《医院消毒供应中心清洗消毒及灭菌效果检测规范》WS 310.3-2016
 - 4、《公共场所集中空调通风系统卫生规范》WS 394-2012
 - 5、《医疗机构消毒技术标准》(2023年版)
 - 6、《消毒管理办法》(2017年12月26日发布)
 - 7、《综合医院建筑设计规范》GB 51039-2014
 - 8、《洁净厂房设计规范》GB 50073-2013
 - 9、《中国医院建设指南》(2018版)
 - 10、《建筑照明设计标准》GB 50034-2013
1. CSSD(central sterile supply department) Management Standard WS 310.1-2016
 2. CSSD(central sterile supply department) Cleaning Disinfection and Sterilization Technical Operation Code WS 310.2-2016
 3. CSSD(central sterile supply department) Cleaning Disinfection and Sterilization Result Test Code WS 310.3-2016
 4. The central air conditioning ventilation system of public places cleanliness standard WS 394-2012
 5. Technical Standard for Disinfection of Medical Institutions (2023 edition)
 6. Disinfection Management Measures (Issued on December 26, 2017)
 7. General Hospital building design standard GB 51039-2014
 8. Standard Design Code of Clean Workshop GB 50073-2013
 9. China Hospital Construction Guidelines (2018 Edition)
 10. Standard for Architectural Lighting Design GB 50034-2013

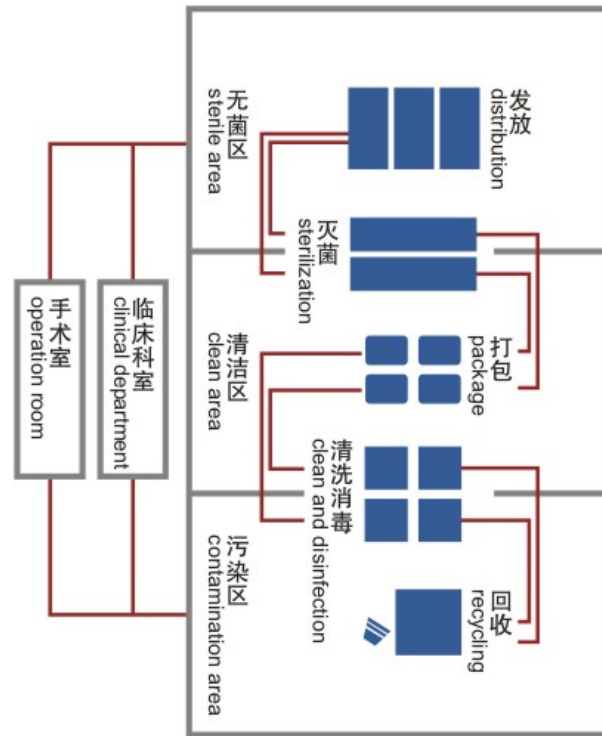


DESIGN PRINCIPLE

设计原则

- 1、物品由污到洁单向流程，不交叉、不逆流；
- 2、去污区、检查包装及灭菌区和无菌物品存放区之间设计实际屏障；
- 3、去污区与检查包装及灭菌区之间应设洁、污物品传递通道，并分别设人员出入缓冲间；
- 4、缓冲间设感应式洗手设施；
- 5、检查包装及灭菌区设专用的封闭式洁具间。

1. The whole process from a contaminated area to a clean area, without any cross or reverse.
2. Physical barriers are placed between the decontamination area, package inspection and sterilization area, and sterile area.
3. Delivery paths are established between decontamination area and package inspection & sterilization area, the buffer rooms should be placed separately for people enter and entrance.
4. The hand washing facility in the buffer room should be inductive.
5. A Sealing-type sanitary ware room should be included in the package inspection & sterilization area.



第一屏障：对抗病原微生物第一屏障，位于污染区和清洁区。高通量清洗消毒器对污染物品进行清洗、消毒，双门通道式设计最低化降低交叉感染。

第二屏障：对抗病原微生物第二屏障，位于清洁区和无菌物品存储区。

大型双门通道式灭菌器对清洗消毒后的物品进行灭菌，有效保证灭菌物品的安全。

The First Shield: The first shield is located at contamination area and clean area to prevent the pathogenic microorganism. High-throughput cleaning and sterilizing functioned by the washing disinfector and the double-door design of which is efficiently reduce the cross contamination.

The Second Shield: The second shield is located at clean area and sterile item storage area to prevent the pathogenic microorganism.

The big double-door sterilizer functions to sterilize the cleaned and disinfected item, which ensure the safety of the sterilized items.

DESIGN CONCEPT

设计理念

消毒供应中心在综合性医院的重要作用是为医院提供安全的生产流程、安全的产品使用，保护医护人员安全及环境使用安全。

The central sterile supply department(CSSD) plays an important role for the general hospital in providing a safe producing process, safe products and the protection of medical staff of the safe environment.

消毒供应中心的最终目标--安全

The final target of the CSSD--SAFETY

- ☑ 人员安全 Personnel safety
危险物品预前处理、采用机械清洗消毒、人员职业安全防护
Hazard items pre-treatment, machinery clean and disinfection, personnel career safety protection
- ☑ 物品安全 Items safety
控制污染源、切断传播途径、保护劳动成果
Control the contamination source, cut off the broadcasting path, and protection
- ☑ 环境安全 Environment safety
区域相对独立、污物排放处置、气流控制
Separately partition areas, contaminated air exhausting and treatment , air flow control



CSSD RETRIEVE SYSTEM

消毒供应中心追溯系统

灭菌 Sterilize

支持空锅灭菌及日常灭菌（高温、低温灭菌），实时扫描记录灭菌时间、灭菌人员、治疗包等信息；提供灭菌器状态查询（空闲、灭菌准备、灭菌中），并可显示灭菌中的详细物品信息或总量。

Support the empty sterilizing and daily sterilizing (high temperature or low temperature), real-time recording the sterilizing time, sterilizing staff, and the instrument packages. Provide the sterilizer status inquiry (spare time, sterilizing standby, in sterilization), as well as displaying the detailed items information and the total amount.

存放 Storage

支持空锅灭菌及日常灭菌，实时扫描记录灭菌时间、灭菌人员、治疗包等信息；提供灭菌器状态查询，并可显示灭菌中的详细物品信息或总量。

Support the empty sterilizing and the daily sterilization, real time recording the sterilizing time, sterilizing staff and the instrument packages. Provide the statuses inquiry, display the detailed items information and the total amount.

打包 Package

支持清洗完的物品条形码标签打印；支持敷料物品的条形码标签打印；支持清洁区日常监测包、BD监测包、生物监测包标签打印；包外条形码标识、包含物品名称规格、包装人员、灭菌类型、灭菌日期、有效日期、记录打包人员、打包日期。

Support printing the barcode label on the washed items. Support printing the barcode label on the dressing items. Support printing the barcode label on the normal monitoring packages. Barcode identification of the package, including items name and specification, package staff, sterilizing mode, sterilizing date, expiration date, record print staff, packaging date.

发放 Distribution

支持一次性物品申请发放；支持非一次性物品申请发放；申请发放、借用发放、部分物品发放；支持自备物品发放；支持手术器械发放。

Support the application of the distribution of the disposable items. Support the application of the distribution of the non-disposable items. Distribution application, lend distribution, partial items distribution. Support the distribution of the self-prepared items. Support the distribution of the surgical instruments.

清洗 Cleaning

记录物品的清洗器清洗全过程；清洗器、清洗程序、清洗人员、清洗批次，清洗开始和结束时间；支持手工清洗过程的记录，记录清洗人员、清洗时间；清洗状态及托盘状态查看及审核。

Record the entire process of the washing disinfector. Cleaning procedure, staff, cleaning batch, the start and the end time. Support the record of the manual cleaning process, including clean staff and time. Check the cleanliness status and tray status, as well as the verification.

回收 Recycling

支持手工回收：输入回收科室及物品回收；支持集中回收：自动获取全院申请单回收；详细记录回收人员、回收时间、回收科室、回收物品数量；回收查询。

Support the manual recycling: input the recycling department the items. Support centralized recycling: automatically retrieve all departmental application forms. Detailed record the recycling staff, time, recycling department and the items quantity. Recycling inquiry.

追溯 Retrieval

一次性物品追溯

追溯一次性物品的发放情况，以及历次发放信息，并提供一次性物品按生产批号进行统计查询。

非一次性物品追溯

可完整追溯器械回收、清洗消毒、包装、灭菌、发放、使用过程中的所有信息；追溯同批次清洗的物品所在科室；追溯同批次灭菌的物品所在科室。

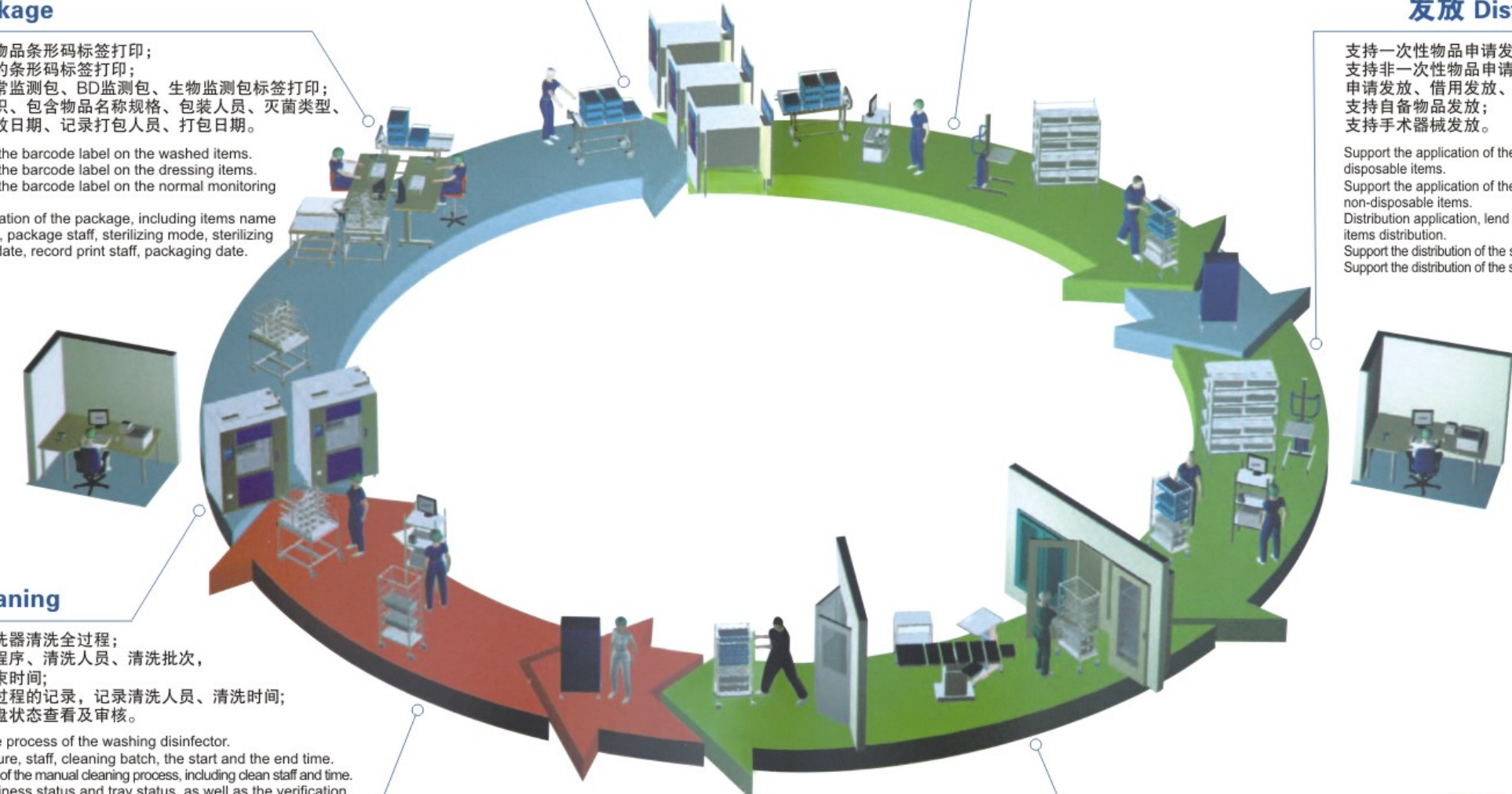
Disposable Items Retrieval

Retrieve the distribution of the disposable items and the related historic info, and the proceed the statistics inquiry according to the producing batch number.

Non-disposable Items Retrieval

Fully trace all information throughout the process of device recycling, cleaning and disinfection, packaging, sterilization, distribution, and utilization.

Tracing the department where the items cleaned in the same batch are located. Tracing the department where the items sterilized in the same batch are located.

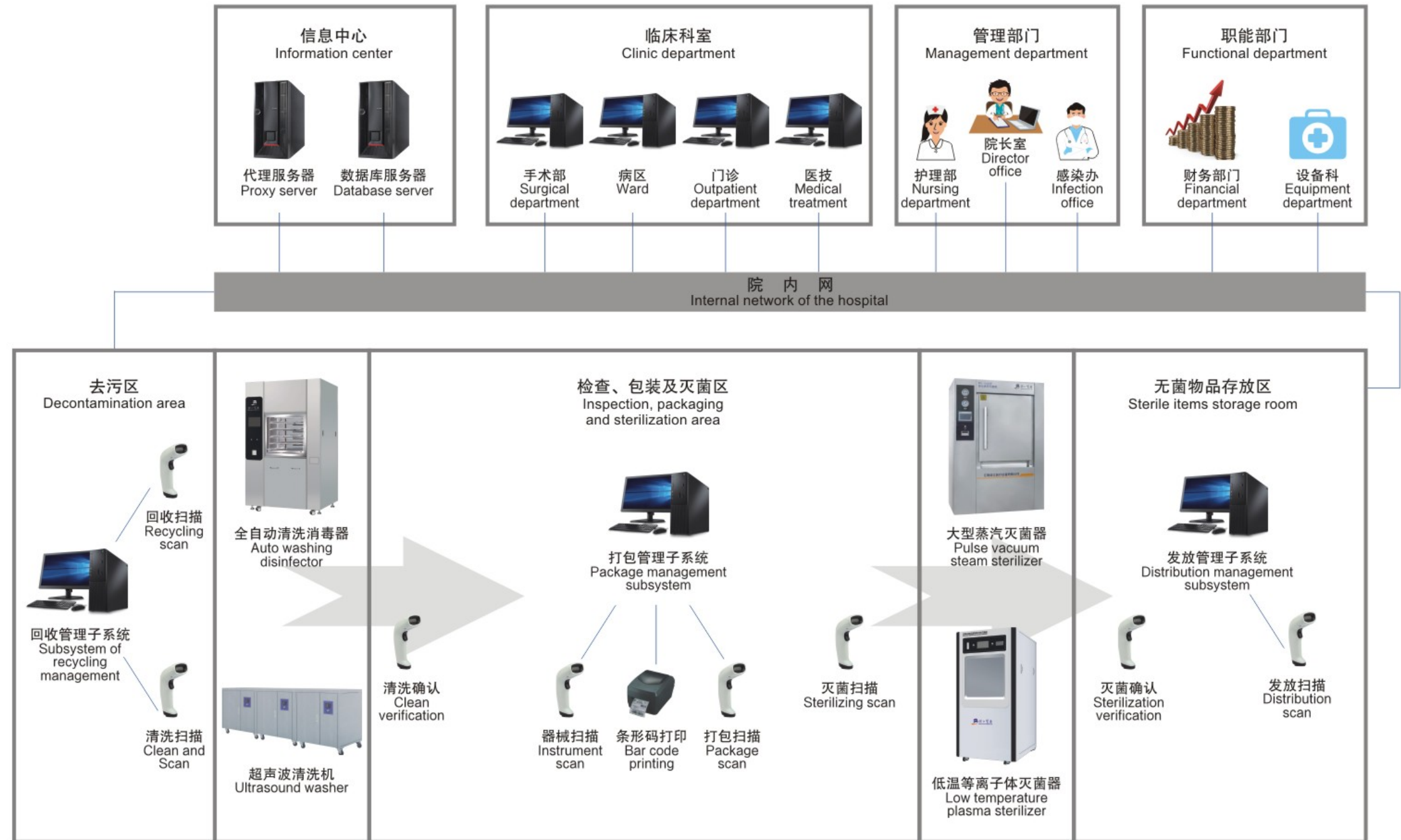


CSSD RETRIEVE SYSTEM

消毒供应中心追溯系统

消毒供应中心管理追溯系统是滨江医疗在多年跟踪结合国外医院感控数字化信息技术的基础上，立足于自主研发，成功施行弯道超越，推出了一款系列软件产品——既能满足中国医院CSSD提升管理之急需，又量身于中国卫生部行业最新标准，专注于为医院消毒供应提供全方位管理解决方案，致力于推动我国医院感染预防与控制事业的发展，最大限度地减低感染的风险。

The Disinfection Supply Center Management Traceability System is a series of software products developed by Binjiang Medical based on years of experience in hospital infection control and combining with digital information technology, which not only meets the urgent need for improving CSSD management in Chinese hospitals but is also tailor-made for China's Ministry of Health's latest standards. It focuses on providing a comprehensive management solution for sterile supply in hospitals and is committed to promoting the development of hospital infection prevention and control, thereby minimizing the risk of infections.

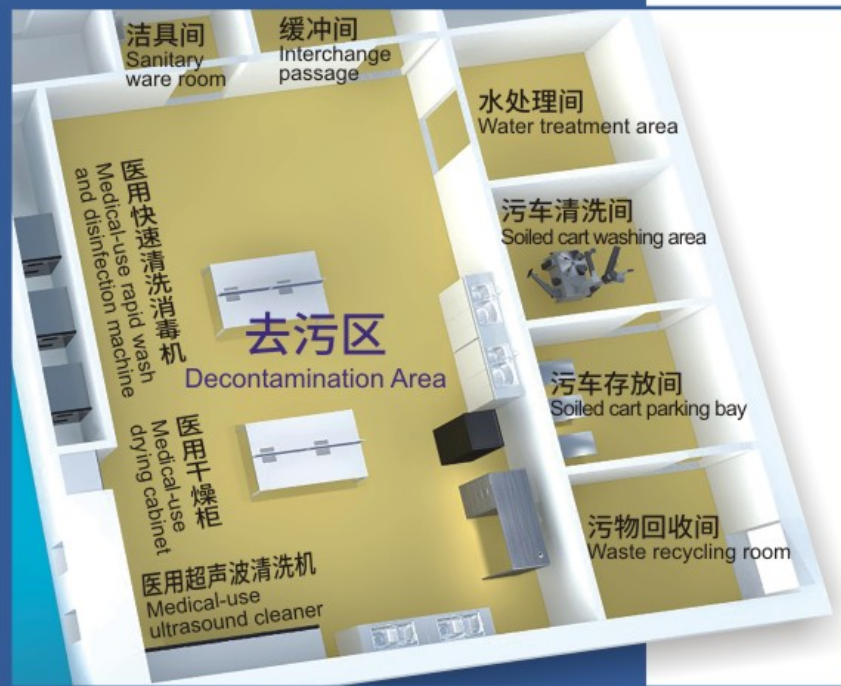


去污区

Decontamination area

CSSD内对重复使用的诊疗器械、器具和物品，进行回收、分类、清洗、消毒（包括运送器具的清洗消毒等）的区域，为污染区域。

The area within CSSD that recycles, classifies, cleans, and disinfects reusable diagnostic and therapeutic equipment, appliances, and items (including cleaning and disinfecting transport equipment) is classified a contaminated area.



去污区主要设备

The chief equipment in the decontamination area

快速式全自动清洗消毒器

Rapid type full automatic washing disinfector

- 1、清洗速度快
 - 2、运行零等待
 - 3、出色的清洗和干燥效果
 - 4、PLC控制
 - 5、触摸屏人机界面
 - 6、高效、稳定、智能
1. Quick washing
 2. Efficient working without pause
 3. Excellent clean and drying
 4. PLC control
 5. Touch screen, HMI interface
 6. High-efficient, stable and intelligent



型号 Model	QX-520
外形尺寸(宽×高×深) mm Overall size (W×H×D)	1251×2038×1007
清洗舱尺寸(宽×高×深) mm Chamber size (W×H×D)	693×1110×800
容积(L) Chamber	520
水耗量(L/步) Water consumption (L/step)	50
装载量(DIN标准托盘) Loading capacity (DIN standard tray)	15
电源 Power	380VAC/50Hz
加热方式 Heat model	电加热 Electric heated
功率(KW) Consumption	25.5
净重(Kg) N.W	720

型号 Model	QX-360
外形尺寸(宽×高×深) mm Overall size (W×H×D)	1180×1880×848
清洗舱尺寸(宽×高×深) mm Chamber size (W×H×D)	643×1040×640
容积(L) Chamber	360
水耗量(L/步) Water consumption (L/step)	30
装载量(DIN标准托盘) Loading capacity (DIN standard tray)	8
电源 Power	380VAC/50Hz
加热方式 Heat model	电加热 Electric heated
功率(KW) Consumption	22
净重(Kg) N.W	520

去污区主要设备

The chief equipment in the decontamination area

快速式全自动清洗消毒器

Rapid type full automatic washing disinfector

- 1、清洗速度快
 - 2、运行零等待
 - 3、出色的清洗和干燥效果
 - 4、PLC控制
 - 5、触摸屏人机界面
 - 6、高效、稳定、智能
1. Quick washing
 2. Efficient working without pause
 3. Excellent clean and drying
 4. PLC control
 5. Touch screen, HMI interface
 6. High-efficient, stable and intelligent



超声波清洗机

Ultrasound washer

JIBIMED[®]

- 1、高效、经济
 - 2、超声、喷淋、干燥三槽灵活配置
 - 3、对深孔、盲孔清洗效果极佳
1. High efficient and economic.
 2. Three flexible tanks separately designed for ultrasonic, spray, and drying.
 3. Excellent cleaning to the deep holes and blind holes.



型号 Model	QX-260
外形尺寸(宽×高×深) mm Overall size (W×H×D)	866×1800×645
清洗舱尺寸(宽×高×深) mm Chamber size (W×H×D)	643×871×557
容积(L) Chamber	260
水耗量(L/步) Water consumption (L/step)	25
装载量(DIN标准托盘) Loading capacity (DIN standard tray)	8
电源 Power	380VAC/50Hz
加热方式 Heat model	电加热 Electric heated
功率(KW) Consumption	20
净重(Kg) N.W	350

去污区部分耗材

Partial consumables in decontamination area



去污区主要设备

The chief equipment in the decontamination area

☑ 医用干燥柜

Medical-use drying cabinet

- 1、触摸屏人机界面友好
 - 2、PLC控制系统精确稳定
 - 3、内循环专利技术节约能源
 - 4、双热风组合保证干燥效果
1. Touch screen, HMI interface friendly.
 2. PLC controlled system, precise and stable.
 3. Inner cycle patented technology, energy saving and Eco-friendly.
 4. Double hot wind paths guarantee the drying effect.



项目 Item	参数 Parameter
电源 Power	380V
电压/频率 (V/Hz) Voltage/frequency	AC 380V 50Hz (带保护地线) With protection earth wire
干燥时间 Drying time	干燥时间可任意设定 (1min-9999min) Drying time (1-9999mins)
操作屏 Operation screen	彩色触摸控制面板 Colorful touch control screen
开门方式 Door open mode	双开门 Double doors

☑ 水处理系统

Water treatment system



- 1、产水水质满足国家消毒供应中心用水标准
 - 2、预处理系统自动冲洗及再生运行
 - 3、软水、纯水具有独立的供水管路，可多点取水
 - 4、PLC全自动运行控制，无需专人看管
 - 5、结构紧凑简洁，占地面积小
1. The quality of the produced water meets the National Central sterile supply department standards.
 2. The pre-processing system operates automatically for flushing and regeneration.
 3. Separate pipelines for soft water and purified water.
 4. PLC controlled working system, no need the supervision.
 5. Compact and concise structure, small area is required for installation.



项目 Item	参数 Parameter
电导率 Electrical conductivity	$\leq 15 \mu\text{s}/\text{cm}$ (25°C)
内毒素、细菌去除率 Endotoxin and bacteria removal rate	$\geq 99.9\%$
进水压力 Water inlet pressure	0.2Mpa~0.4Mpa
电源电压 Power voltage	AC380V, 三相五线、接地可靠 3 phases and 5 lines, reliable grounded
电源频率 Power frequency	50Hz \pm 1Hz
原水温度 The temperature of the raw water	5 ~ 35°C (25°C最佳) 25°C the best
原水硬度 The hardness of the raw water	$\leq 8\text{mmol}$
产水水质 Water quality	符合医院消毒供应中心 WS 310.1/2/3-2016标准 Complies with the WS 310.1/2/3-2016 standard of hospital sterile supply

去污区附件

Items for decontamination area



▲ 清洗喷枪
Flush spray gun



▲ 空压机
Air compressor



▲ 小车清洗机
Cart cleaner



▲ 污物推车
Dirt trolley



▲ 储槽平台车
Drum flat trolley



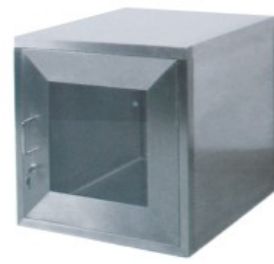
▲ 污物回收车
Dirt recycling trolley



▲ GD器械清洗托盘
GD instrument clean tray



▲ DIN器械清洗托盘
DIN instrument clean tray



▲ 双门互锁传递窗
Double-door interlock transferring window



▲ 升降传递窗
Lifting delivery window



▲ 长槽清洗槽
Long washing tank



▲ 两槽清洗槽
Double washing tank



▲ 洗眼器
Eye washer



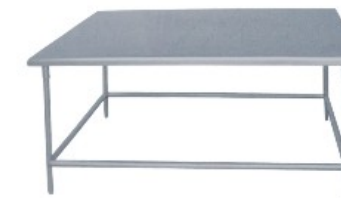
▲ 软水机
Water softener



▲ 平板运物车
Flat delivery cart



▲ 分类工作台
Classification workbench



▲ 污物接收台
Dirt reception station



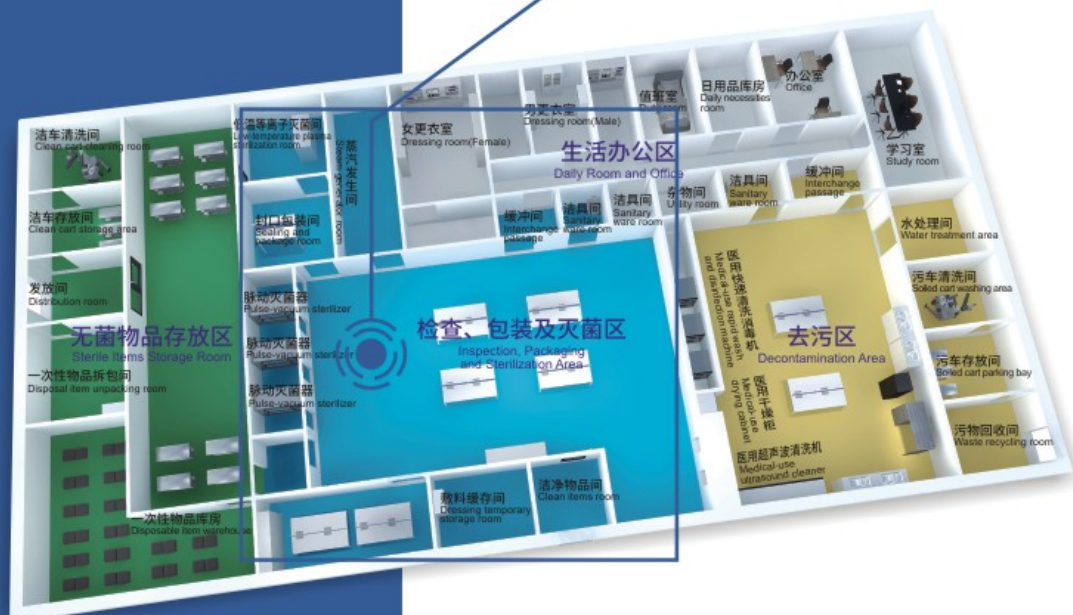
▲ 清洗工作台
Clean workbench

检查、包装及灭菌区

Inspection, packaging and sterilization area

CSSD内对污后的诊疗器械、器具和物品，进行检查、装配、包装及灭菌（包括敷料制作等）的区域，为清洁区域。

The area in CSSD designated for the inspection, assembly, packaging, and sterilization (including dressing production) of contaminated medical equipment, appliances, and items is classified as a clean area.



WG 系列 机动门脉动真空灭菌器

WG series mechanical-door pulse vacuum sterilizing cabinet

 滨江医疗
BINJIANG MEDICAL



项目 Item	参数 Parameter	项目 Item	参数 Parameter
内室设计压力 Inner chamber design pressure	-0.1 ~ 0.3MPa	内室安全阀开启压力 Open pressure for inner chamber's safety valve	0.28MPa
夹套设计压力 Jacket design pressure	0.3MPa	夹套安全阀开启压力 Open pressure for jacket's safety valve	0.28MPa
设计温度 Design temperature	150°C	灭菌温度控温精度 Precision of sterilization temperature control	0~2°C
最高工作温度 Maximum working temperature	138°C	温度均匀性 Temperature uniformity	± 1°C
最高工作压力 Maximum working pressure	0.25MPa	负压脉动真空幅值及次数 Negative pressure pulsation vacuum amplitude and times	幅值 amplitude -80~0KPa 次数 times 1~99
真空泄漏率 Vacuum leakage rate	≤0.13KPa/min	跨压脉动次数 Times of pulses across pressure	幅值 amplitude -80~80KPa 次数 times 1
极限真空度 Ultimate vacuum	-96KPa	正压脉动次数 Times of positive pressure pulses	1~3

检查、包装及灭菌区 主要设备

The chief equipment in the inspection, packaging and sterilization area

☑️ WG 系列 升降门脉动真空灭菌器 WG series lifting-door pulse vacuum sterilizing cabinet

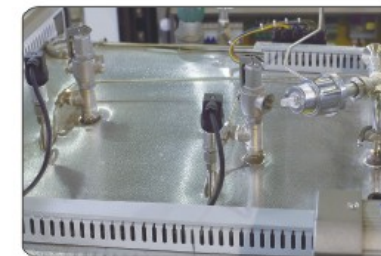
WG系列脉动真空灭菌器可广泛应用于制药、生物工程、医疗卫生、科研等领域，对灭菌要求极高的无菌衣、笼盒、工器具、橡胶、液体、医用敷料等的灭菌处理。

WG series pulsating vacuum sterilizer can be widely used in pharmaceutical, bioengineering, medical health, scientific research and other fields. It is applied to sterilizing the articles with high grade requirements, such as sterile clothes, medical cages, tools, instruments, rubber, liquid, medical dressing and so on.



☑️ WG 系列 平移门脉动真空灭菌器 WG series sliding-door pulse vacuum sterilizing cabinet

JIBIMED®



项目 Item	参数 Parameter	项目 Item	参数 Parameter
内室设计压力 Inner chamber design pressure	-0.1 ~ 0.3MPa	内室安全阀开启压力 Open pressure for inner chamber's safety valve	0.28MPa
夹套设计压力 Jacket design pressure	0.3MPa	夹套安全阀开启压力 Open pressure for jacket's safety valve	0.28MPa
设计温度 Design temperature	150°C	灭菌温度控温精度 Precision of sterilization temperature control	0~2°C
最高工作温度 Maximum working temperature	138°C	温度均匀性 Temperature uniformity	± 1°C
最高工作压力 Maximum working pressure	0.25MPa	负压脉动真空幅值及次数 Negative pressure pulsation vacuum amplitude and times	幅值 amplitude -80~0KPa 次数 times 1~99
真空泄漏率 Vacuum leakage rate	≤0.13KPa/min	跨压脉动次数 Times of pulses across pressure	幅值 amplitude -80~80KPa 次数 times 1
极限真空度 Ultimate vacuum	-96KPa	正压脉动次数 Times of positive pressure pulses	1~3

项目 Item	参数 Parameter	项目 Item	参数 Parameter
内室设计压力 Inner chamber design pressure	-0.1 ~ 0.3MPa	内室安全阀开启压力 Open pressure for inner chamber's safety valve	0.28MPa
夹套设计压力 Jacket design pressure	0.3MPa	夹套安全阀开启压力 Open pressure for jacket's safety valve	0.28MPa
设计温度 Design temperature	150°C	灭菌温度控温精度 Precision of sterilization temperature control	0~2°C
最高工作温度 Maximum working temperature	138°C	温度均匀性 Temperature uniformity	± 1°C
最高工作压力 Maximum working pressure	0.25MPa	负压脉动真空幅值及次数 Negative pressure pulsation vacuum amplitude and times	幅值 amplitude -80~0KPa 次数 times 1~99
真空泄漏率 Vacuum leakage rate	≤0.13KPa/min	跨压脉动次数 Times of pulses across pressure	幅值 amplitude -80~80KPa 次数 times 1
极限真空度 Ultimate vacuum	-96KPa	正压脉动次数 Times of positive pressure pulses	1~3

检查、包装及灭菌区 主要设备

The chief equipment in the inspection, packaging and sterilization area

自动翻盖型 立式蒸汽灭菌器 Automatic flip-top vertical steam sterilizer

自动翻盖型立式蒸汽灭菌器是一种设计先进，安全可靠的灭菌设备，该设备主要适用于各级医院、卫生所、实验室、检验科等场所，用于灭菌各种医疗器械、器皿、布草、手术衣、培养基、液体等物品，以预防交叉感染。

The automatic flip-top vertical steam sterilizer has an advanced design and is safe and reliable. It is mainly used in hospitals of all levels, health clinics, laboratories, and testing departments to sterilize various medical devices, utensils, cloths, surgical gowns, culture media, liquids, and other articles to prevent cross-infection.



立式压力蒸汽灭菌器 Vertical pressure steam sterilizer

全自动内循环(检验科专用)
Specifically use for clinical laboratory



型号 Model	LS-60FD	LS-80FD	LS-100FD	LS-120FD
灭菌室有效容积 Sterilizing chamber volume	60L 396 × 490mm	80L 396 × 650mm	100L 480 × 560mm	120L 480 × 660mm
升起后高度 (mm) Lifting height	1310	1590	1475	1565
工作压力 Working pressure	0.22MPa	0.22MPa	0.22MPa	0.22MPa
工作温度 Working temperature	134°C	134°C	134°C	134°C
热均匀度 Heat average	≤ ± 1°C	≤ ± 1°C	≤ ± 1°C	≤ ± 1°C
计时选择范围 Time range	0~99min	0~99min	0~99min	0~99min
温度选择范围 Temperature range	105~134°C	105~134°C	105~134°C	105~134°C
功率/电源电压 Consumption/power	(3+1.3)KW/AC220V.50Hz	(3+1.3)KW/AC220V.50Hz	(4.5+1.3)KW/AC220V.50Hz	(5.8+1.3)KW/AC220V.50Hz
外形尺寸 (mm) Overall size	686 × 556 × 913	686 × 556 × 1035	840 × 600 × 970	840 × 600 × 1060
运输尺寸 (mm) Transportation size	786 × 656 × 1013	786 × 656 × 1135	940 × 610 × 1000	940 × 610 × 1075
毛重/净重 G.W/N.W	210kg / 180kg	230kg / 200kg	300kg / 270kg	325kg / 295kg

型号 Model	LS-35HG	LS-50HG	LS-75HG	LS-100HG
灭菌室有效容积 Sterilizing chamber volume	35L φ 318 × 450mm	50L φ 340 × 550mm	75L φ 400 × 600mm	100L φ 440 × 650mm
额定工作压力 Rating working pressure	0.22MPa	0.22MPa	0.22MPa	0.22MPa
额定工作温度 Rating working temperature	134°C	134°C	134°C	134°C
最高工作压力 Maximum working pressure	0.25MPa	0.25MPa	0.25MPa	0.25MPa
热均匀度 Heat average	≤ ± 1°C	≤ ± 1°C	≤ ± 1°C	≤ ± 1°C
计时选择范围 Time range	0~99min or 0~99hour59min	0~99min or 0~99hour59min	0~99min or 0~99hour59min	0~99min or 0~99hour59min
温度选择范围 Temperature range	0~134°C	0~134°C	0~134°C	0~134°C
功率/电源电压 Consumption/power	1 × 2.5KW/AC220V.50Hz	2 × 1.5KW/AC220V.50Hz	3 × 1.5KW/AC220V.50Hz	3 × 1.5KW/AC220V.50Hz
外形尺寸 (mm) Overall size	710 × 490 × 1150	710 × 490 × 1150	750 × 510 × 1250	750 × 510 × 1250
运输尺寸 (mm) Transportation size	740 × 550 × 1310	740 × 550 × 1310	780 × 600 × 1380	780 × 600 × 1380
毛重/净重 G.W/N.W	120kg / 95kg	124kg / 100kg	146kg / 120kg	148kg / 122kg

检查、包装及灭菌区 主要设备

The chief equipment in the inspection, packaging and sterilization area

台式脉动真空蒸汽灭菌器

Table top pulse vacuum steam sterilizer

本灭菌器是一种安全可靠并自动控制的小型快速台式灭菌设备，适合于医疗卫生、制药、科研等单位。对于手术、齿科、眼科器械，玻璃器皿，药品，培养基和织物敷料以及食品等耐受饱和蒸汽作用的物品提供快速灭菌作用。

The table type sterilizers are safely auto-controlled, which are designed for the dental clinics, hospitals, school lab, scientific research institutions and laboratory. And mostly suitable for sterilizing of surgical, dental and eye instruments, glassware medicine, culture medium and biological dressing, food, etc.



卧式脉动真空蒸汽灭菌器

Horizontal pulse vacuum steam sterilizer

本灭菌器采用压力饱和蒸汽对物品进行灭菌操作，以脉动真空排气方式消除冷空气对温度的影响，最终真空抽湿结合套层烘干使物品干燥。是利用压力饱和蒸汽在冷凝时能释放大量潜热的物理特性，使待灭菌的物品处于高温和潮湿的状态，经过一定的时间，使物品中所有细菌及芽胞组织遭到破坏，从而达到灭菌的目的。主要用于医院、化工、食品、科研、制药等单位，对手术器械、敷料、药品、培养基、食品等作消毒灭菌使用。

The sterilizer works on pressurized saturated steam for sterilization of items, eliminating the impact of cold air on the temperature by means of pulsating vacuum exhaust, and eventually drying the items by vacuum dehumidification realized in a jacket. It utilizes the physical property that pressurized saturated steam can release a large amount of latent heat when condensing, rendering the items to be sterilized under high temperature and humidity. The purpose of sterilization is attained after a period during which the bio-structure of all the germs in the items are completely destroyed. It is mainly used in hospitals, chemical industry, food, scientific research, pharmaceutical and other units for disinfection and sterilization of surgical instruments, dressings, medicines, culture medium, food, etc.

JIBIMED®



型号 Model	TM-20DV	TM-24DV
灭菌室容积 Sterilizing chamber volume	18L φ 250 × 360mm	24L φ 250 × 470mm
额定工作压力 Rating working pressure	0.22MPa	0.22MPa
额定工作温度 Rating working temperature	134°C	134°C
灭菌温度选择 Temperature adjust range	105~134°C	105~134°C
计时选择范围 Time range	0~99 min	0~99 min
灭菌室热均匀度 Heat average	≤ ± 1°C	≤ ± 1°C
电源电压/功率 Power/consumption	AC220V.50Hz / 2KW	AC220V.50Hz / 2KW
整机外形尺寸 (mm) Overall size	480 × 680 × 455	480 × 680 × 455
包装尺寸 (mm) Exterior package dimension	580 × 790 × 580	580 × 790 × 580
毛重/净重 G.W/N.W	56kg / 47kg	57kg / 53kg

型号 Model	WS-100YV	WS-150YV	WS-200YV	WS-300YV
灭菌室容积 Sterilizing chamber volume	100L φ 440 × 670mm	150L φ 440 × 1000mm	200L φ 515 × 1000mm	300L φ 600 × 1080mm
额定工作压力 Rating working pressure	0.22MPa	0.22MPa	0.22MPa	0.22MPa
额定工作温度 Rating working temperature	134°C	134°C	134°C	134°C
灭菌温度选择范围 Temperature range	115~134°C	115~134°C	115~134°C	115~134°C
灭菌时间选择范围 Time for sterilization	0~99min	0~99min	0~99min	0~99min
干燥时间选择范围 Time for drying	0~99min	0~99min	0~99min	0~99min
热均匀度 Heat average	≤ ± 2°C	≤ ± 2°C	≤ ± 2°C	≤ ± 2°C
真空极限 Vacuum limit	-0.08MPa	-0.08MPa	-0.08MPa	-0.08MPa
功率/电源电压 Consumption/power	10KW/AC380V.50Hz	10KW/AC380V.50Hz	10KW/AC380V.50Hz	13KW/AC380V.50Hz
外形尺寸 (mm) Overall size	1400 × 660 × 1640	1400 × 660 × 1640	1400 × 750 × 1740	1520 × 850 × 1850
运输尺寸 (mm) Transportation size	1560 × 820 × 1820	1560 × 820 × 1820	1560 × 910 × 1880	1680 × 1080 × 2100
毛重/净重 G.W/N.W	430kg / 376kg	458kg / 404kg	505kg / 440kg	613kg / 528kg

检查、包装及灭菌区 主要设备

The chief equipment in the inspection, packaging and sterilization area

☑ 低温等离子体灭菌器 Low temperature plasma sterilizer

- 1、低温（灭菌温度50℃）
 - 2、低温（10% RH）
 - 3、快速、无残留、无污染
1. Low temperature (sterilizing temperature 50°C)
 2. Low temperature
 3. Fast, residue-free, pollution-free



☑ 低温等离子体灭菌器 Low temperature plasma sterilizer



型号 Model	BJ-PS 200
灭菌舱形状 Chamber shape	矩形 Rectangular
开门方式 Door open mode	双门 (可定做单门) Double doors (optional for the single door)
舱室尺寸 (宽 × 高 × 深) mm Chamber size (W × H × D)	550 × 445 × 900
舱室容积 (L) Chamber capacity	220
可用容积 (L) Valid capacity	200
外形尺寸 (宽 × 高 × 深) mm Overall size (W × H × D)	932 × 1775 × 1098
内置灭菌程序 Built-in sterilization program	标准程序 Standard procedure
最小安装空间 (mm) Minimum installation space	1500 × 1300
最小维修距离 (mm) Minimum repairing distance	1000
后罩离墙最小距离 (mm) The minimum distance between the rear shell and the wall	150
安装环境温度 (°C) Installation temperature	10~40
电源 Power supply	380V/50Hz
功率 (KW) Consumption	3.5
重量 (Kg) Weight	400

型号 Model	BJ-PS 120
灭菌舱形状 Chamber shape	矩形 Rectangular
开门方式 Door open mode	单门 Single door
舱室尺寸 (宽 × 高 × 深) mm Chamber size (W × H × D)	450 × 410 × 780
舱室容积 (L) Chamber capacity	144
可用容积 (L) Valid capacity	120
外形尺寸 (宽 × 高 × 深) mm Overall size (W × H × D)	845 × 1700 × 990
内置灭菌程序 Built-in sterilization program	快速循环 标准循环 加强循环 Fast cycle, standard cycle, strengthen cycle
最小安装空间 (mm) Minimum installation space	1500 × 1200
最小维修距离 (mm) Minimum repairing distance	1000
后罩离墙最小距离 (mm) The minimum distance between the rear shell and the wall	150
安装环境温度 (°C) Installation temperature	10~40
电源 Power supply	220V/380V
功率 (KW) Consumption	3
重量 (Kg) Weight	350

检查、包装及灭菌区 主要设备

The chief equipment in the inspection, packaging and sterilization area

❑ 低温等离子体灭菌器 Low temperature plasma sterilizer

- 1、低温（灭菌温度50℃）
 - 2、低温（10% RH）
 - 3、快速、无残留、无污染
1. Low temperature (sterilizing temperature 50°C)
 2. Low temperature
 3. Fast, residue-free, pollution-free



型号 Model	BJ-PS 80
灭菌舱形状 Chamber shape	矩形 Rectangular
开门方式 Door open mode	单门 Single door
舱室尺寸(宽×高×深) mm Chamber size (W×H×D)	400×360×680
舱室容积(L) Chamber capacity	100
可用容积(L) Valid capacity	80
外形尺寸(宽×高×深) mm Overall size (W×H×D)	746×1700×940
内置灭菌程序 Built-in sterilization program	快速循环 标准循环 加强循环 Fast cycle, standard cycle, strengthen cycle
最小安装空间(mm) Minimum installation space	1500×1200
最小维修距离(mm) Minimum repairing distance	1000
后罩离墙最小距离(mm) The minimum distance between the rear shell and the wall	150
安装环境温度(°C) Installation temperature	10~40
电源 Power supply	220V/50Hz
功率(KW) Consumption	2.5
重量(Kg) Weight	300

❑ 电热蒸汽发生器 Electric steam generator

- 1、自动化控制，安全可靠
 - 2、产出蒸汽快，高效节能
 - 3、喷塑板外壳，美观大方
1. Automatic control, safe and reliable
 2. Fast producing the steam, high efficient and energy saving
 3. Spray-coated shell



JIBI MED®

❑ 灭菌区部分耗材 Part disposables in sterilizing area



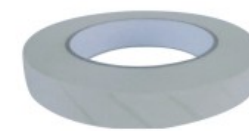
灭菌指示包装袋
Sterilization indicator packaging bag



压力蒸汽灭菌快速生物指示剂
Rapid biological indicator for pressure steam sterilizing



134°C压力蒸汽灭菌化学指示卡
134°C Chemical Indicator Card for pressure steam sterilizing



压力蒸汽灭菌化学指示胶带
Chemical indicator tape for steam sterilization



高温医用封包胶带
High-temperature medical packaging tape



B-D试验测试包
BD test & inspection package



无纺布
Non-woven fabric

检查、包装及灭菌区附件

Items for inspection, packaging and sterilization area



▲ 器械柜
Instrument storage cabinet



▲ 敷料柜
Dressing storage cabinet



▲ 器械检查放大镜
Instrument inspection magnifying glass



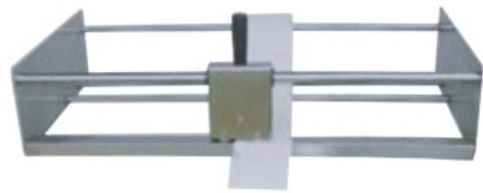
▲ 包布打包检查台
Wrapping cloth package checking workbench



▲ 器械打包检查台
Instrument package checking workbench



▲ 干燥物品工作台
Dry items workbench



▲ 切割机
Cutting machine



▲ 平板运物车
Flat delivery cart



▲ 篮筐运输车
Baskets delivery trolley



▲ 器械工作台
Instrument workbench



▲ 储槽车
Drum trolley



▲ 储槽平台车
Drum flat trolley



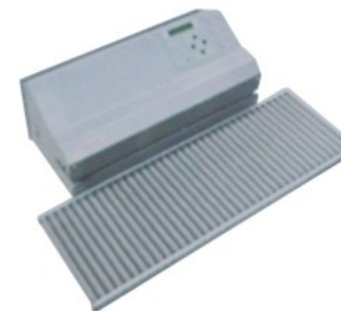
▲ 平板货架
Flat display shelf



▲ 组合式货架
Combination shelf



▲ 包布车
Wrap cloth trolley



▲ 热封机
Sealing machine



▲ 滤片型灭菌盒
Filter-type sterilization box

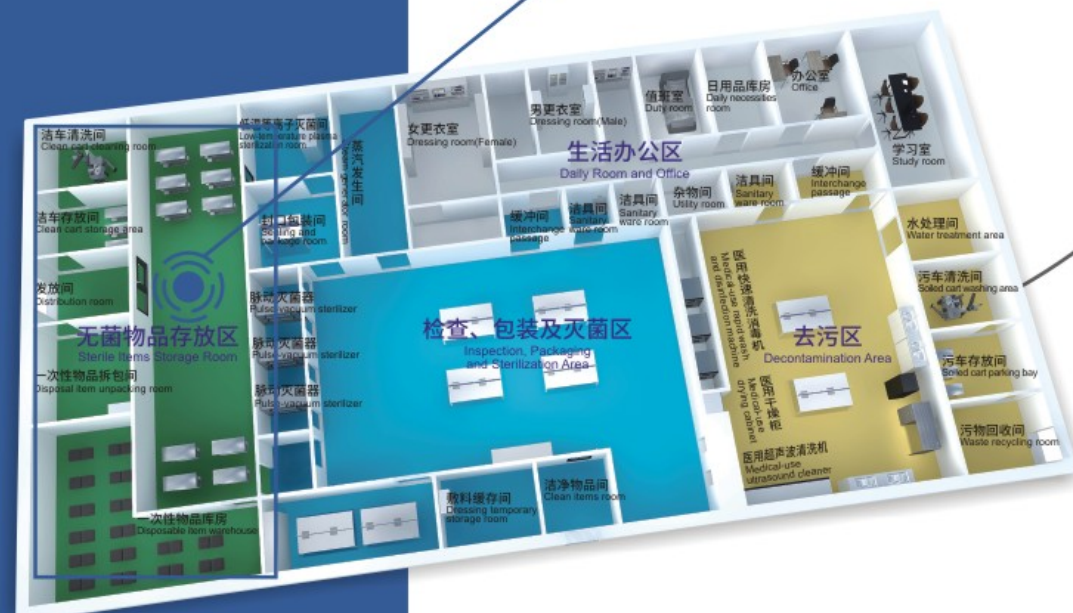
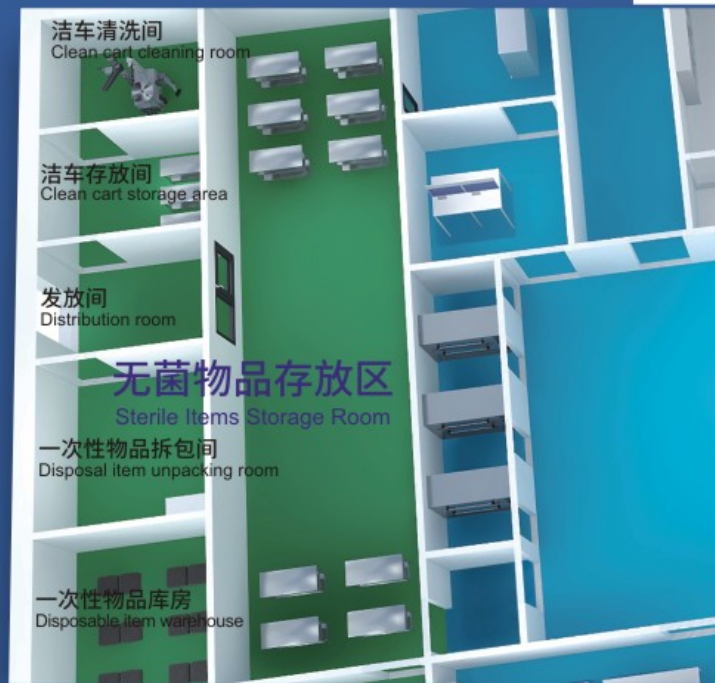


▲ 阀门型灭菌盒
Valve-type sterilization box

无菌区 Sterile area

CSSD内存放、保管、发放无菌物品的区域，
为清洁区域。

The area for storage and distribution of the sterile items in CSSD is classified as the clean area.



无菌区附件
Items for sterile area



▲ 货架
Shelf



▲ 平板货架
Float shelf



▲ 单列网管储存架
Single-row net type storage shelf



▲ 器械柜
Instrument storage cabinet



▲ 六单元发放窗
Six unit distribution window



▲ 不锈钢敷料柜
Stainless steel dressing cabinet



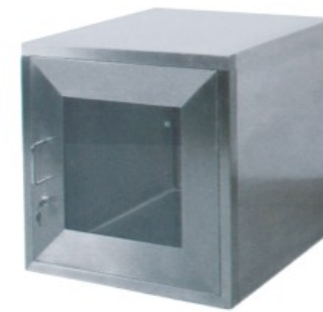
▲ 标签打印机
Tag printer



▲ 双列网筐储存架
Double-row baskets storage shelf



▲ 四列篮管储存架
Four-row baskets storage shelf



▲ 双门互锁传递窗
Double-door interlock transferring window



▲ 平板运物车
Flat delivery cart



▲ 篮筐运输车
Baskets delivery trolley



▲ 发放车
Distribution trolley



▲ 升降传递窗
Lifting delivery window



▲ 传递柜
Delivery cabinet



▲ 储槽平台车
Drum flat trolley



▲ 篮筐
Baskets



▲ 包布车
Wrap cloth trolley